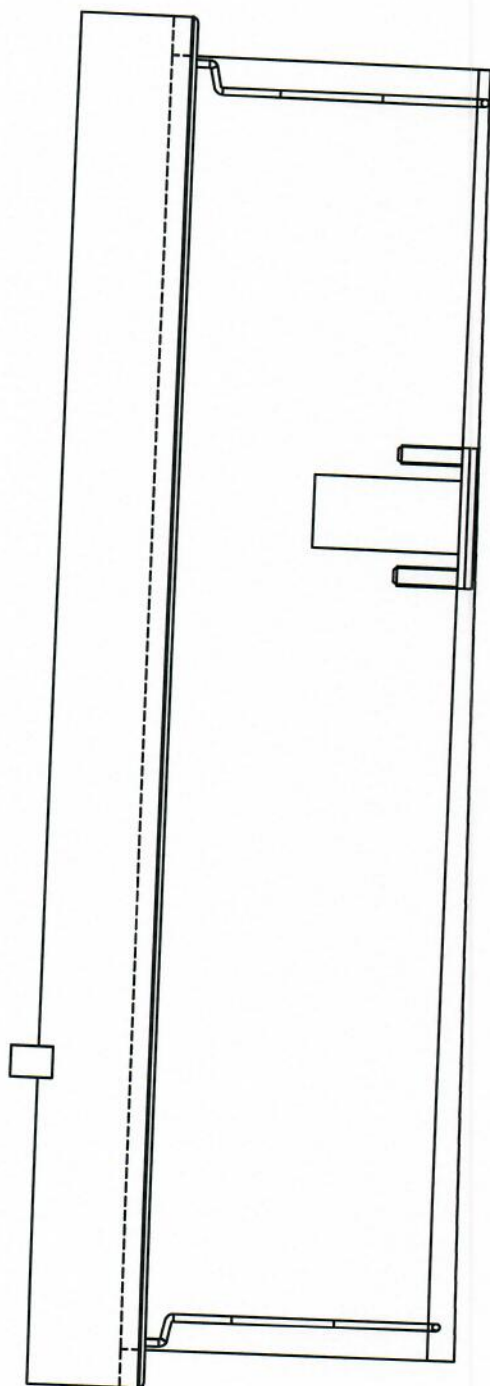


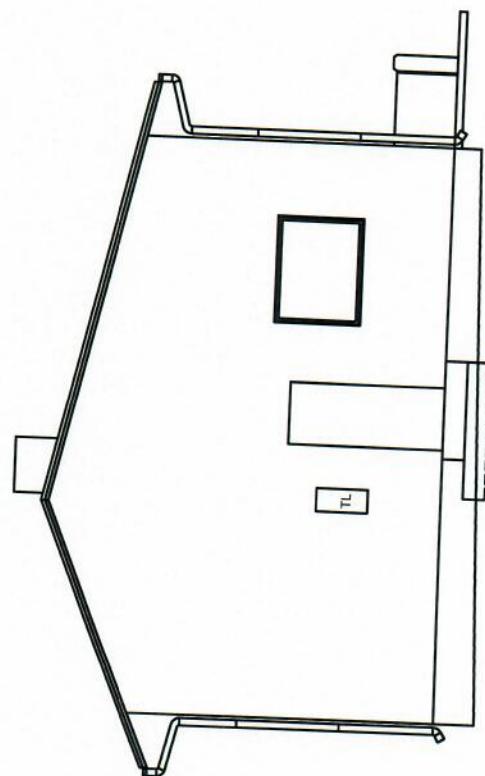
Technical drawing of a rectangular panel, likely a door or window frame, showing four square openings arranged vertically. The panel is shown in a perspective view. Dimensions are indicated: the width is 420 (horizontal dimension) and 126 (vertical dimension on the left side). The height is 1767 (vertical dimension on the right side). The drawing includes a dashed line indicating a hinge or latch mechanism on the left side.

A technical drawing of a rectangular structure, possibly a window or door frame, with a slanted top-left corner. The drawing includes a dimension line on the right side indicating a height of 792. The structure has a slanted top-left corner and a small rectangular protrusion on the left side. The drawing is oriented vertically on the page.

Południe



Zachód



Terminowizacja Budynku Zespołu Szkół I Przedszkola w Młodziejcu Włoszczańskim	
ul. Główna 32, 99-322 Opatów	
Wzrost	11.2024
Architektura	1:1000
Elewacja - południe, zachód	3
Projektant	100-0000000
Wzrost	11.2024
Architektura	1:1000
Elewacja - południe, zachód	3
Projektant	100-0000000